



CAMPING INFO BOOKLET

INDEX

General Information	1
Important Things to Know.	1
General Rules for Camping at 4R Ranch.	1
Campfires and Firewood.	1
Campsite Booking for Wine Club Members	1
Frequently Asked Questions.	2-3
Overview of Campsite Listings in HipCamp	4
Help in Choosing Which Campsite to Book: Table of Campsite-Specific Features	4
4R's Main Tent Camping Listing	5
General Info	5
Campsite-Specific Features	5-6
4R's RV Listing and Overview Map	7
RV Site #1 Details and Map	8
RV Site #2 Details and Map.	9
4R's VIP Top-o'-the-Ridge Listing.	10
4R's West-of-Creek Dispersed Listing	11

MAPS

To 4R	12
From 4R.	13
Ranch Overview.	14
Campsite Area Overview.	15
Main Tent Campsite and West-o'-the-Creek Dispersed Campsite Detail.	16
VIP Top of the Ridge Campsite Detail.	17
RV and GastHaus Map.	18
RV#1 Detailed Parking Map.	19
RV#2 Detailed Parking Map.	20



CAMPING

TASTING ROOM PHONE & WEB:

1473 County Road 477

940.736.3370

www.4rwines.com

See website for hours. Reservations strongly recommended. Mention Promo Code **Hip** for 10% off wine at the tasting room.

TASTING ROOM EVENTS:

See the website.

WiFi: The WiFi at Campsite is open. Signal is strongest at the main entrance to the campsites.

EMERGENCY CONTACTS:

- Ranch Landline: 940.759.5030
- Walt Roper: 214.577.9848
- Suzanne Roper: 214.212.0404
- Chris Roper: 469.463.6622

IMPORTANT THINGS TO KNOW:

This is Rattlesnake, Water Moccasin, Copperhead, Mountain Lion and Wild Hog territory – please be cautious!

Toilet: There is a non-flushing toilet in the toilet shed (*Sitzen und Schützen*).

Sinks and Showers: There are two sinks and two showers in the shower shed (*Sudzen und Scrubzen*). The water temperature for the showers is fixed. Showers are operated via pull chains.

GENERAL RULES FOR CAMPING AT 4R RANCH:

- Pets must remain on a leash
- Quiet time is 11:00 pm to 8:00 am
- Campers must pay for their campsite via Hipcamp.

CAMPFIRES AND FIREWOOD – APPLICABLE TO ALL CAMPSITES

Each campsite has a designated firepit. Rather than charging a la carte for firewood, we have elected to simply price our campsites to allow us to provide firewood. Firewood is available at the toilet shed.

Campfires are not allowed during burn bans. HipCamp will notify you if Cooke County has issued a ban. You can also call the Cooke County Sheriff at 940-665-3471 ext. 4 or visit <http://www.co.cooke.tx.us/page/cooke.Home> to determine whether a burn ban is in effect in Cooke County.

CAMPSITE BOOKING FOR 4R WINE CLUB MEMBERS

Club 4R members wishing to avail themselves of their free campsite stays need to contact Walt Roper at walt@4rwines.com or call Walt on his cell at 214.577.9848. He can tell you which sites are available for any particular date.

FREQUENTLY ASKED QUESTIONS

Do you have somewhere that I can charge my phone or other electric devices?

Indeed we do. There are outlets located in the Shower Shed and the Toilet Shed. In addition, those campers who are camping in campsites 10 and 11 can utilize their own extension cords to bring power from outlets in the toilet shed to their campsites. And of course we have outlets in the tasting room during the times that we are open.

Do you supply firewood?

See first page.

Where can I hike?

Campers can hike on the Brambles Mountain Bike Trail if they pay a fee of \$10 per person per day. There is no charge for children 12 and under. The Trailhead is in the woods just to the Northwest of the Tasting Room, down the steps from the lawn. A map of the trail is available on the mountain bike page at 4Rwines.com

Where can I ride a mountain bike?

Campers can ride on the Brambles Mountain Bike Trail if they pay a fee of \$10 per person per day. There is no charge for children 12 and under. The Trailhead is in the woods just to the Northwest of the Tasting Room, down the steps from the lawn. A map of the trail is available on the mountain bike page at 4Rwines.com

Do you have route maps available for gravel grinders?

Currently, no – but we are working on it.

Where can I go to the bathroom?

Our Toilet Shed – the Sitzen und Schitzen – is located at the entrance to the main campsite road, immediately across the main road from the 4R GastHaus. It contains one non-flushing toilet. See maps.

Where can I take a shower?

The 4R Shower Shed – the Sudzen and Scrubzen – is located at the entrance to the main campsite road, immediately across the main road from the 4R GastHaus. There are two showers and two sinks. See maps.

Are dogs allowed at the tasting room?

Yes. Dogs must be on a leash if they are on the deck, on the lawn, or inside the tasting room. Dogs 7 pounds or under are allowed in the tasting room itself.

How can I purchase wine?

You can go to the tasting room during the hours that the tasting room is open. If you are not at the ranch, you can order online.

Do I need reservations at the tasting room?

Technically, no – but they are highly recommended. 4R allows customers to reserve a table for a 1.5 hour reservation. Due to the limited number of tables, the quality of our wine, and the natural scenery that the ranch is blessed with, we are popular when the weather is good. Consequently, there may be no tables available for walk-in customers—and if there's no table available, customers cannot be served.

Do you serve food at the ranch?

Yes, we serve pizzas, cheese boards, meatballs and other daily specials.

Where does the mountain bike trail / hiking trail start?

The Trailhead is in the woods just to the Northwest of the Tasting Room, down the steps from the lawn.

How much does it cost to use the mountain bike / hiking trail?

Campers can hike or bike on the Brambles Mountain Bike Trail if they pay a fee of \$10 each. There is no charge for children 12 and under.

Can I drive to your campsites?

Most of the campsites can be driven to and parked at. The one exception is the VIP Top O' the Ridge Campsite, parking for which is at the tasting room parking lot.

Who do I call in the event of an emergency?

If it is a real emergency, call 911. Otherwise, you can call Walt at 214.577.9848.

Where can I get cell service or WiFi?

There is WiFi available generally in the area that stretches from the Toilet Shed to the Shower Shed, and at Campsite #10. This "Campsite" WiFi is open and requires no password. You can turn on your WiFi calling to make calls. There is also marginal cell phone coverage near RV Site #2. And there is WiFi at the tasting room, and outside near the tasting room. The password for the "TRGuest" WiFi is "4rwinery".

How do I book a campsite reservation?

Potential campers can go to HipCamp.com and search for "4R". Because all campsites within a listing have to be priced the same, we created four separate campsite listings: (1) the original tent camping listing; (2) the VIP Top-O'-the-Ridge listing; (3) the West-of-the-Creek dispersed campsite listing; and (4) the RV listing.

Who can I tell that the porta potty in the toilet shed is full / out of toilet paper / needs to be cleaned?

Feel free to call or text Walt at 214.577.9848.

How many cars can I have at the campsite?

Generally, we prefer that you limit the number of cars at a campsite to 2 cars, but up to 4 are permitted.

Can I park my RV at a tent campsite?

Yes, but only certain sites are suitable for RV boondocking. See Table of Campsite-Specific Features on page 4.

Can we put up tents at RV sites?

Yes, but you must pay extra for each person if you exceed the 4 person limit per site.

Do you have a dump station for RVs?

We do not. However, the Veranda Inn in Nocona, Texas allows RVs to dump for \$9 cash.

<https://verandanocona.com/rv-park/>

Also, the Fun Town RV Park at Winstar Casino has dump stations.

<https://www.winstar.com/stay/accomodations/fun-town-rv-park-at-winstar/>

OVERVIEW OF CAMPSITE LISTINGS

4R Ranch currently has a total of 4 separate “listings” within HipCamp. (All campsites within a HipCamp listing must be priced the same, so in order to charge a different amount for a certain type of campsite – such as an RV site versus tent site – campsites must be placed within separate listings).

Name of Listing	Number of Sites	Number of Persons per Site (without paying more)	Price per site
4R Ranch Vineyards & Winery Camping (Main Tent Camping Listing)	15	4	\$30
4R Ranch Vineyards & Winery RV Site	2	4	\$40
4R VIP Top-O'-the-Ridge Campsite	1	10	\$50
4R West-of-Creek Dispersed Campsite	20	4	\$20

HELP IN CHOOSING WHICH CAMPSITE TO BOOK: TABLE OF CAMPSITE-SPECIFIC FEATURES

Campsite Number	Shade?	Protected from the Wind?	Suitable for Hammocks?	Suitable for RV Boondocking?	Flat / Suitable for Rooftop Tents?	Park at site?	Private / Isolated?	Good for Large Groups?
Main Tent #1	No	No	No	Yes	Yes	Yes	No	Yes
Main Tent #2	No	No	No	Yes	Yes	Yes	No	Yes
Main Tent #3	Some	No	No	Yes	Yes	Yes	No	Yes
Main Tent #4	30%	No	No	Yes	Yes	Yes	No	Yes
Main Tent #5	100%	No	No	Yes	Yes	Yes	Semi	Yes
Main Tent #6	33%	From North	Yes	Yes	Yes	Yes	Semi	No
Main Tent #7	80%	From North	Yes	Yes	Yes	Yes	Yes	No
Main Tent #8	No	Yes	No	No	No	Yes	Yes	No
Main Tent #9	No	Yes	No	No	No	Yes	No	No
Main Tent #10	75%	Somewhat	Yes	Yes	Yes	Yes	No	Yes
Main Tent #11	60%	Somewhat	Yes	Yes	Yes	Yes	No	Yes
Main Tent #13	30%	From North	Yes	No	No	Yes	No	No
Main Tent #14	20%	Yes	Yes	No	Yes	Yes	Yes	No
Main Tent #15	100%	Yes	Yes	No	Yes	Yes	Yes	No
VIP	0%	South only	No	No	No	No	Yes	Yes
West-of-the-Creek Dispersed (all)	Yes, 100% if desired	No	Yes	Yes	Yes	Yes	No	Yes

4R'S MAIN TENT CAMPING LISTING

GENERAL INFO

Access: Each of the campsites in this listing are accessed via the main campsite road, which branches off from the main ranch road. Campers can park vehicles or RVs at any of these campsites.

Water: There are several hose-bibs at the campsites. One is located at the northwest corner of the shower shed and another is located to the north of the shower shed under the trees.

Electricity: 120 Volt / 15 Amp: There is a regular outlet on the north side of the shower shed and more outlets inside the toilet shed.

Trash/Dumpster: There is currently a regular 65 gallon plastic trash can in the toilet shed and a 50 gallon metal trash can in the shower shed. Campers may also place trash in a 2-yard green metal self-dumping hopper that sits inside the toilet shed and functions as an overflow receptacle for trash. We also have two dumpsters on the ranch: one at the front of the ranch on the north side of the irrigation shed, and one at the south end of the tasting room parking lot.

CAMPSITE-SPECIFIC FEATURES

Site #1: This campsite is roughly 55 feet in diameter and has a metal fire ring that measures 17 inches in diameter. The fire ring is an open metal ring with no grate. It has no shade and no trees, so it makes a great winter campsite, but not so great for the summer. It is not suitable for hammocks, since it has no trees. It does have nice views of the 1st valley creek.

Site #2: This campsite is an oval that is roughly 100 feet long and 50 feet wide and has a metal fire ring that measures 30 inches in diameter. This campsite is in close proximity to campsites 3 and 4. This campsite has one tree. The fire ring is an open metal ring with no grate. It is not suitable for hammocks, since it only has one tree with limbs not so close to the ground. It does have nice views of the 1st valley creek.

Site #3: This campsite is a rectangle that is roughly 100 feet long and 50 feet wide and has a metal fire ring that measures 16 inches in diameter. The fire ring is an open metal ring with no grate. This campsite is in very close proximity to campsite 2 and is actually connected to campsite 4. This campsite has two trees which provide some shade, but the trees are relatively far apart. Thus this campsite is not really suitable for hammocks. The fire ring is an open metal ring with no grate. It does have nice views of the 1st valley creek.

Site #4: This campsite is roughly 120 feet long and 50 feet wide and has a metal fire ring that measures 28 inches in diameter. The fire ring is an open metal ring with no grate. This campsite is immediately adjacent to, and connected to, campsite 3. This campsite has nice views of the 1st valley creek.

Site #5: This campsite is roughly 54 feet in diameter and has a metal fire ring that measures 30 inches in diameter. The fire ring is an open metal ring with no grate. It is one of 4R's shadiest campsites.

Site #6: This campsite is relatively small. It is an oval shaped campsite that is 65 feet long and 30 feet wide and has a metal fire ring that measures 25 inches in diameter. The fire ring is an open metal ring with no grate. This campsite backs up to a ravine below our front pond, and approximately one third of the site is within this shady niche in the woods. That niche provides the perfect area in which to hang hammocks.

Site #7: This campsite is roughly 65 feet in diameter and has a metal fire ring that measures 36 inches in diameter. The fire ring is an open metal ring with no grate. Campsite #7 is widely regarded as the best

campsite, due to the fact that it is situated on a sort of peninsula that overlooks creeks on two sides, and is shaded by a large tree that can accommodate hammocks due to its horizontal limbs.

Site #8: This campsite is an oval that is 110 feet long and 35 feet wide and has a metal fire ring that measures 29 inches in diameter. The fire ring is an open metal ring with no grate. #8 sits adjacent to the first valley creek and is well protected from the wind. Except for the late afternoon, there is no shade at this site. Because it is protected from the wind, it is a good winter site, but too hot in the summer.

Site #9: This campsite is an oval that is 110 feet long and 35 feet wide and has a metal fire ring that measures 29 inches in diameter. The fire ring is an open metal ring with no grate. This campsite has no shade and is not the flattest of sites, so it is not good for a rooftop tent or hammocks. It does have a good view of the creek and is fairly private.

Site #10: This campsite measures roughly 120 feet x 75 feet. It has true hinged fire ring with grate. #10 sits next to the main ranch road and the toilet shed and the shower shed, is large enough to big groups of campers, and is next to the first valley creek. It has a picnic table. It is predominantly flat, and is many campers' favorite campsite. The western edge of the campsite – along the creek – has numerous trees suitable for hammocks. In fact, hammocks are allowed only on this edge of the campsite due to the proximity of RV Site #1.

Site #11: This campsite is a fairly large rectangular shaped campsite that is situated between the main ranch road and the first valley creek. It measures at least 120 feet x 75 feet. It has a metal fire ring that measures 4 feet in diameter. The fire ring is an open metal ring with no grate. This campsite is probably the least private, but can handle large groups. There are several trees in this campsite which offer plenty of shade and several spots for hammocks.

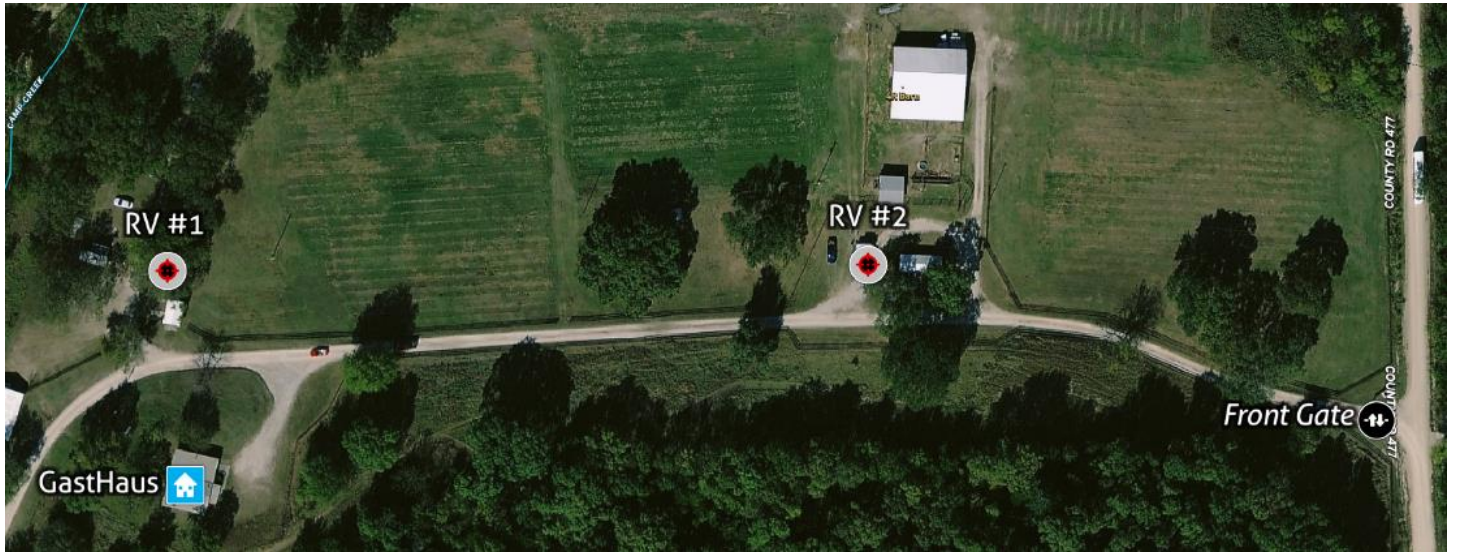
Site #13: This campsite measures roughly 60 feet x 25 feet and has a metal fire ring that measures 13 inches in diameter. Approximately half of this campsite is shaded, and hammocks can be hung within that shady area. The fire ring is an open metal ring with no grate. This campsite is very similar to campsite #6.

Site #14: This campsite is roughly 40 feet in diameter and has a metal fire ring that measures 28 inches in diameter. The fire ring is an open metal ring with no grate. It is fairly large and private. It has good shade and is a good place to shelter on windy days and hang a hammock. If you are looking to camp in wide open spaces this is probably not the campsite for you.

Site #15: This campsite is roughly 60 feet x 35 feet and has a metal fire ring that measures 4 feet in diameter. The fire ring is an open metal ring with no grate. This site is nestled into a wooded area below the front pond and is very well protected from the wind, and thus is a good choice for winter. Roughly half of this site is shaded and the other half is in the sun. Because there are lots of trees with low hanging branches, this site is great for hammocks.

4R's RV LISTING

As shown in the map below, RV Site #2 is on the west side of the Irrigation Shed, which is the first structure that you will encounter after entering the front gate. RV site #1 is further down the main road, just after the second structure you will encounter. Please see the following pages for site-specific maps and information.



Important: Before you arrive, please read the site-specific information regarding the power plug receptacle size and how to park your RV on the following two pages. If you need adapters or extension cords, please contact Walt Roper on his cell at 214.577.9848.

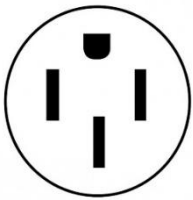
RV SITE #1

This site is adjacent to 4R's "Sudzen and Scrubzen" Shower Shed and is a back in site, and the preferred approach is detailed in the map below. This site has a metal fire ring that measures 36 inches in diameter. The fire ring is an open metal ring with no grate. This site has water supply and electric hookups, but no wastewater facilities.

Water: RV campers can hook up to the hose bib at the northwest exterior corner of the Shower Shed.

Electric Hookups. There are three sources of power that campers at RV Site #1 can utilize:

- (1) a regular outlet (120 Volt / 15 Amp) on the north exterior wall of the Shower Shed;
- (2) several regular outlets (120 Volt / 15 Amp) at the southwest corner of the Shower Shed;
- (3) one 120 Volt / 50 amp receptacle at the southwest corner of the Shower Shed. This receptacle is a NEMA 14-50R. See diagram of receptacle and photos immediately below.



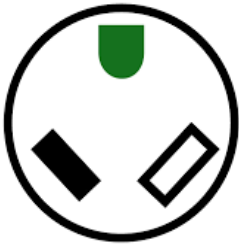
RV SITE #2

This site is located on the west side of the Irrigation Shed and is a pull through site. The preferred approach is detailed in the map below.

This site has a metal fire ring that measures 15 inches in diameter. The fire ring is an open metal ring with no grate. This site has water supply and electric hookups, but no wastewater facilities. Please note that campers also can utilize the larger fire rings at our adjacent concert site.

Water: RV campers can hook up to the hose bib at the southwest exterior corner of the Irrigation Shed.

Electric Hookups. Campers at RV Site #2 can utilize one 120 Volt / 30 amp receptacle on the west exterior wall of the Irrigation Shed. This receptacle is a NEMA TT-30R. See diagram of receptacle and photos immediately below.



RV Site #2 Detailed Parking Map

Preferred orientation of RV is north/south, with hookups on East side of RV (facing shed).

Driving on loop behind shed -- as shown by dashed approach -- is best option.



CAMPSITE-SPECIFIC FEATURES OF 4R'S VIP TOP-O'-THE-RIDGE CAMPSITE



This campsite is on the shoulder of a Hogback Ridge, and features 270 degree views of the Red River Valley. The view simply can't be beat. Campers park at our 4R WindShed Wine Tasting Room parking lot and hike a short ways to get to the beautiful campsite. This is a two minute walk from the tasting room. Moreover, this campsite is right at the entrance to our Brambles mountain bike trail.

IMPORTANT: Campers cannot drive their vehicles to this campsite. Therefore, this is not the campsite for campers who have teardrop trailers, rooftop tents, etc.

Also bear in mind: There is no toilet and no shower except during the times that the tasting room is open (see winery website at 4rwines.com for hours). However, this campsite is just a few minute's drive from the main campsite entrance, where we have showers and a toilet.

To get to this campsite from the 4R front gate, follow the signs to the winery tasting room. Park at the tasting room parking lot. **DO NOT ATTEMPT TO DRIVE TO THIS CAMPSITE.** Walk out on the front lawn of the tasting room and look for the steps that are on the north corner of the lawn. Walk down those steps and you will see the sign for the Brambles Mountain Bike Trail. Rather than turning left onto the trail, walk past that sign up the mountain bike trail to the north (opposite traffic flow and past the wrong way signs) and in 200 feet or so you will come to an opening on the shoulder of the ridge, and you will find the campsite with the fire ring.

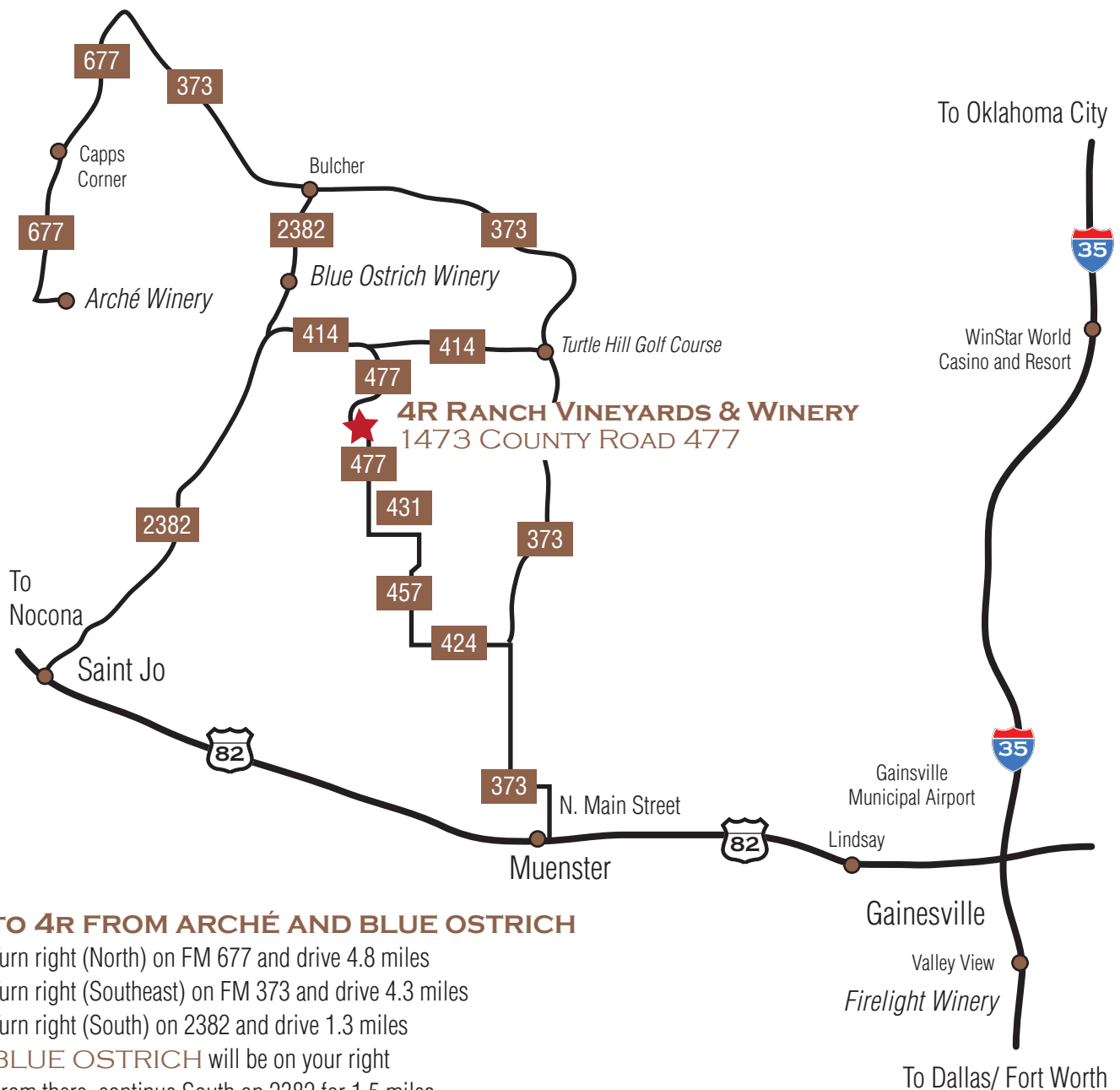
This campsite is roughly 55 feet in diameter and has a metal fire ring that measures 4 feet in diameter. This campsite can handle 10 campers or so.

CAMPSITE-SPECIFIC FEATURES OF 4R'S WEST OF THE CREEK DISPERSED CAMPSITE

This is a 10 acre field just to the west of a creek with scattered trees. Unlike our other 3 listings (main campsite, rv campsite, and VIP campsite) we are offering this area to allow loosely affiliated larger groups -- like members of Spinistry -- to stay and pick how near or far they set up camp from others. It is relatively flat. If you are wanting to make sure you are distant from other campers, you may want to look at the other 4R listings. This is priced at \$20 per vehicle, up to a maximum of 4 persons per vehicle. \$5 per person over and above that.

To get to the West of Creek dispersed camping site, enter the 4R Ranch Vineyards & Winery main gate, then travel down the main road. You will pass a sign on your right that says "4R Camping." Don't turn there -- keep going down the road. You will pass a couple of sheds on your right, and then you will pass over a creek, and you will come to a cattleguard and deer fence. Turn right immediately before the cattleguard and deer fence. Then you will come to a fork in the road. Do not go between the two "Wrong Way" signs on the road. Instead, veer right into the West-of-the-Creek Dispersed Campsite area.

Please call the business number one hour before arrival in order to confirm ETA. If no answer, leave a message. Further instructions will be provided via phone at that time.



TO 4R FROM ARCHÉ AND BLUE OSTRICH

Turn right (North) on FM 677 and drive 4.8 miles
 Turn right (Southeast) on FM 373 and drive 4.3 miles
 Turn right (South) on 2382 and drive 1.3 miles
BLUE OSTRICH will be on your right
 From there, continue South on 2382 for 1.5 miles
 Turn left (East) onto Co Rd 414 and drive 2 miles
 Continue straight (Southeast) onto CR 477 and drive 1.5 miles

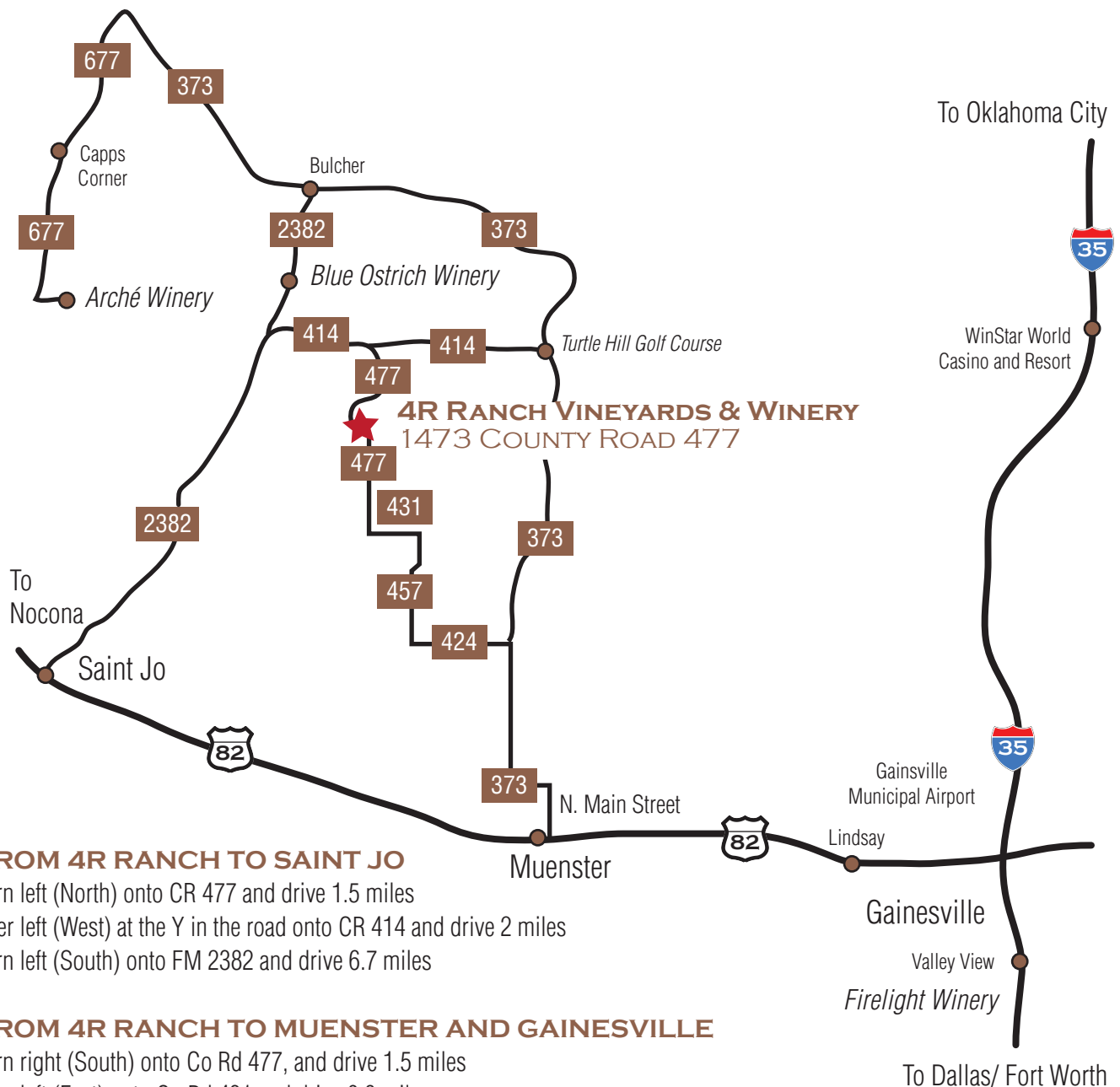
TO 4R FROM MUENSTER (AND WINSTAR CASINO AND DALLAS)

From Hwy 82, head North onto Main Street for .9 miles
 Main Street veers to the West and becomes FM 373; drive 2.8 miles
 Turn left (West) onto CR 424 and drive 1.5 miles
 Turn right (North) onto Co Rd 457 and drive 1.8 miles
 Turn left (West) onto Co Rd 431 and drive 0.8 miles
 Turn right (North) onto Co Rd 477, and drive 1.5 miles

TO 4R FROM SAINT JO (AND NOCONA AND WICHITA FALLS)

Head North on FM 2382 and drive 6.7 miles
 Turn right (East) onto CR 414 and drive 2 miles
 Continue straight (Southeast) onto CR 477 and drive 1.5 miles





FROM 4R RANCH TO SAINT JO

Turn left (North) onto CR 477 and drive 1.5 miles
 Veer left (West) at the Y in the road onto CR 414 and drive 2 miles
 Turn left (South) onto FM 2382 and drive 6.7 miles

FROM 4R RANCH TO MUENSTER AND GAINESVILLE

Turn right (South) onto Co Rd 477, and drive 1.5 miles
 Turn left (East) onto Co Rd 431 and drive 0.8 miles
 Turn right (South) onto Co Rd 457 and drive 1.8 miles
 Turn left (East) onto CR 424 and drive 1.5 miles
 Turn right (South) onto FM 373; drive 2.8 miles
 FM 373 veers to the East and becomes Main Street
 Head South on Main Street to Hwy 82, Muenster
 Turn left (East) onto Hwy 82 to reach Gainesville

FROM 4R RANCH TO BLUE OSTRICH AND ARCHÉ

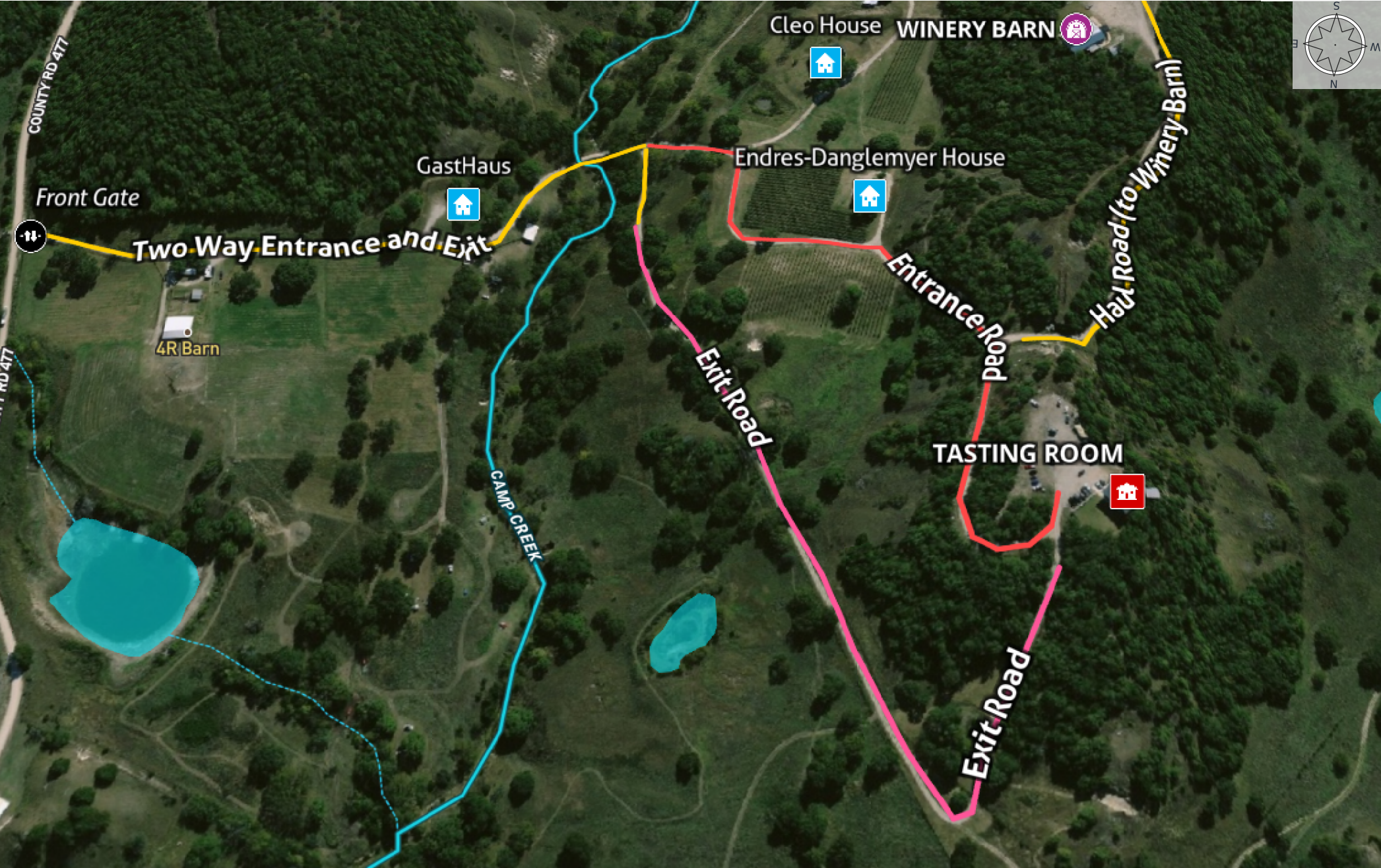
Turn left (North) onto CR 477 and drive 1.5 miles
 Veer left (West) at the Y in the road onto CR 414 and drive 2 miles
 Turn right (North) on FM 2382 and drive 1.3 1.5 miles

BLUE OSTRICH will be on your left

From there, continue North on FM 2382 for 1.5 1.3 miles
 Turn left (Northwest) onto FM 373 and drive 4.3 miles
 Turn left (South) onto FM 677 and drive 4.8 miles to **ARCHÉ**



4R Ranch
Texas, AC +/-



Tasting Room

Gate

Endres - Danglemyer

Winery Barn

Entrance Road

Haul Road (to Winery)

Exit Road

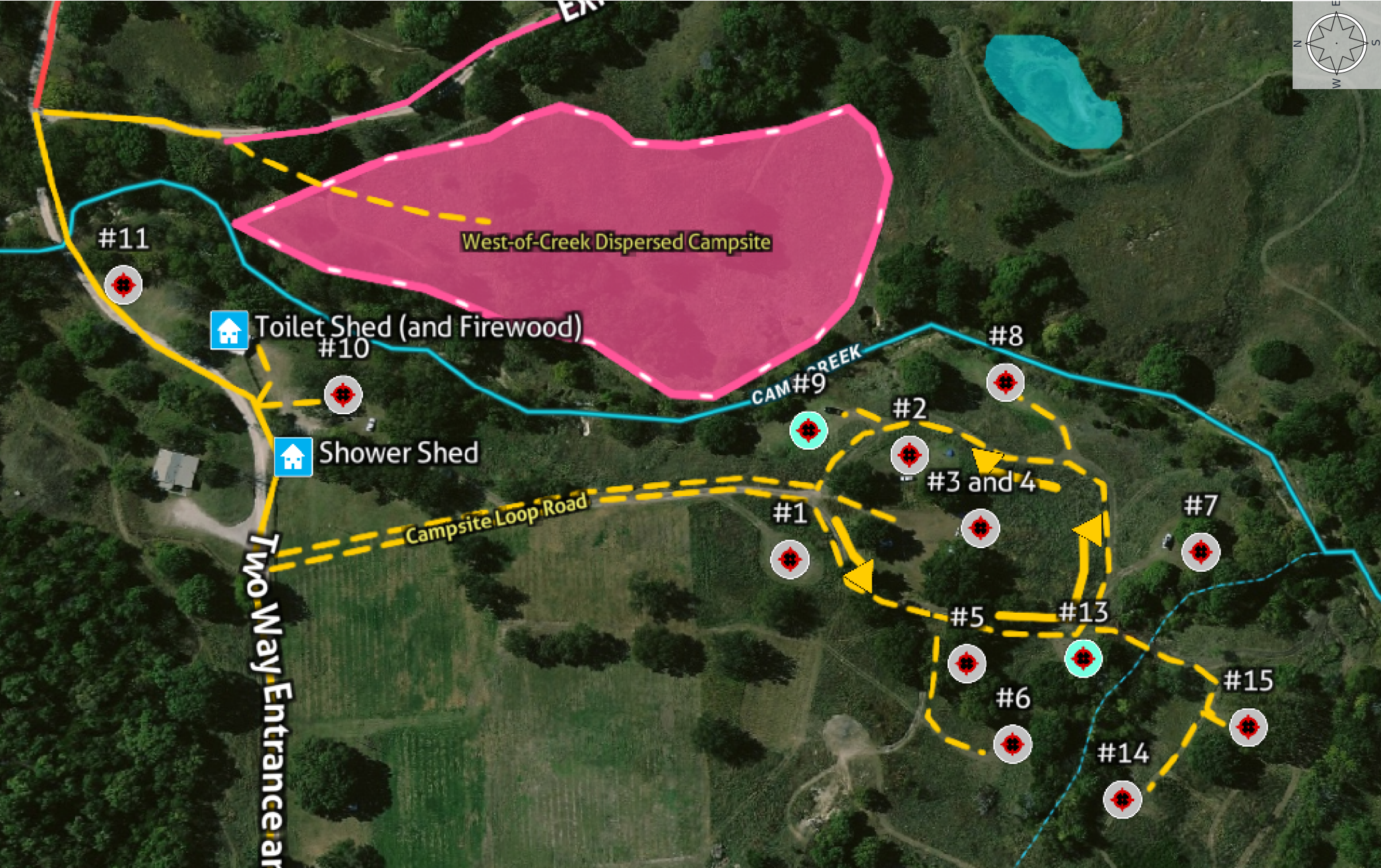
Stream, Intermittent

River/Creek

Water Body



4R Ranch
Texas, AC +/-





Tasting Room

VIP Campsite

Road / Trail 1 1

Entrance Road

Exit Road

Stream, Intermittent

River/Creek

Water Body

4R Ranch
Texas, AC +/-



- Gate
- RV # 1
- RV # 2
- GastHaus
- Stream, Intermittent
- River/Creek
- Water Body

RV Site #1 Parking Map

Pull forward through gate and back in, as shown in approach.

Approach to RV #1

RV #1 Footprint

Two Way Entrance and Exit

Water faucet at NW corner of shower shed. 50amp plug at SW corner of shower shed.

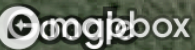
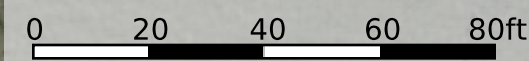


RV Site #2 Detailed Parking Map

Preferred orientation of RV is north/south, with hookups on East side of RV (facing shed).

Driving on loop behind shed -- as shown by dashed approach -- is best option.

30 Amp Plug is on West wall of shed. Water faucet is at Southwest Corner of shed.



- Gate
- GastHaus
- Direction
- RV approach
- Road / Trail
- Original Tent
- Campsite Boundary
- Original Tent
- West - of - Creek
- Race Staging
- NICA Staff Campsite
- Wine Run 5K Parking
- Overflow Parking at
- South Remote
- NICA North Campsite
- NICA South Campsite
- Boundary
- Stream, Intermittent
- River/Creek
- Water Body